

The Exceptional Women Awardees Foundation announces that Sally Drexler, Partner of Odgers Berndtson, joins the EWA January 2020 Cohort of Women Leader Awardees

The Exceptional Women Awardees Foundation (EWA, Los Angeles CA) today announced that after interviews with multiple candidates Sally Drexler, Partner of Odgers Berndtson, has been selected to participate in their Cohort of Women Leaders in the January 2020 EWA Program.

LOS ANGELES (PRWEB) JANUARY 28, 2020

The Exceptional Women Awardees Foundation today announced that after interviews with multiple candidates, Sally Drexler, Partner of Odgers Berndtson, has been selected to join their Cohort of Women Leaders for the January 2020 Awards.

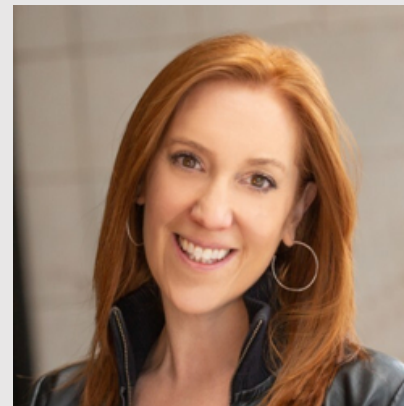
"Sally is a multi-talented executive, who hails from the UK originally. Trained as a lawyer, she joined Granada Television (now ITV Studios) as Head of their Legal and Business affairs for their distribution division, Hatterick Television and then moved into Executive Search. Working with high profile clients like the Swarovski family and Jamie Oliver, as well as CEO's and Board Executives, Sally Drexler has learned the value of client partnerships," commented Lorraine Segil, Chair and CEO of EWA. "She moved to Los Angeles and joined the global search firm named Odgers Berndtson, leading search in digital consumer and media for the LA region. We are delighted to have someone with Sally's diverse talents in our EWA group."

"We congratulate Sally on being admitted into the EWA. Her significant and diverse capabilities will add value to the EWA group and she will benefit greatly through its national and global network." said Steve Potter, Odgers Berndtson USA.

For over 50 years, Odgers Berndtson has helped some of the world's biggest and best organizations find the senior talent to drive their agendas. The firm has 61 offices across 29 countries, with 250 Partners specializing in over 50 sectors.

Learn more at <https://www.odgersberndtson.com/en-us/about-us>

The Exceptional Women Awardees Foundation (EWA) selects high potential, upper-career Exceptional Women from multiple industries, develops and mentors them with guidance and career redesign advice to propel them to sustainable success - one woman at a time. Their year-long program enables the EWA to be connected for life to their ever-expanding EWA global network, as their fellow women leaders move into positions of significance. Learn more at The Exceptional Women Awardees Foundation <http://www.ExceptionalWomenAwardees.com>



Sally Drexler, Partner, Odgers Berndtson

“Working with high profile clients like the Swarovski family and Jamie Oliver, as well as CEO's and Board Executives, Sally Drexler, Partner at Odgers Berndtson, has learned the value of client partnerships," commented Lorraine Segil, Chair and CEO of EWA.”

Share Article



Contact Author

LARRAINE SEGIL

Exceptional Women Awardees Foundation

3106781499

Email >



Isegil

Follow >



Exceptional Women Awardees EWA Founded by Lorraine Segil Scholars
Like >

VISIT WEBSITE





PDF



PRINT